
The Behavioral Risk Factor Surveillance System (BRFSS) is an annual statewide telephone survey of adults developed by the Centers for Disease Control and Prevention and administered by the New York State Department of Health. The BRFSS is designed to provide information on behaviors, risk factors, and utilization of preventive services related to the leading causes of chronic and infectious diseases, disability, injury, and death among the noninstitutionalized, civilian population aged 18 years and older.

Cardiovascular Disease New York State Adults 2005

Introduction

Cardiovascular disease (CVD) is a group of diseases involving the circulatory system and includes strokes and diseases of the heart. Heart disease and stroke are major causes of disability and significant contributors to increases in health care costs. CVD is the leading cause of death in New York, claiming over 70,000 lives annually. It accounts for 45% of all deaths statewide.

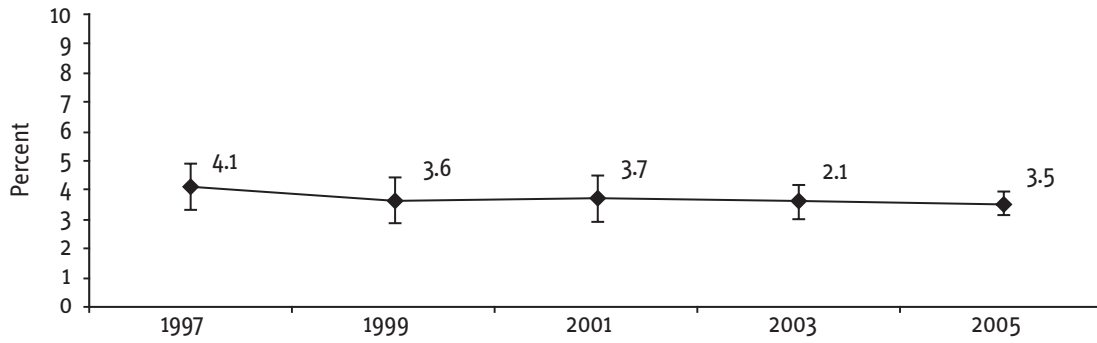
Coronary heart disease (CHD) results from restricted blood flow through the coronary arteries, the vessels that supply oxygen and nutrients to the heart muscle. **Heart attack** (also called acute myocardial infarction) occurs when a coronary artery becomes completely blocked, resulting in lack of blood flow to the heart muscle and therefore loss of needed oxygen. **Angina** refers to pain or discomfort in the chest that occurs when some part of the heart does not receive enough blood and is a common symptom of CHD. A **stroke** (cerebrovascular disease) is the sudden impairment of brain function that results from the interruption of circulation to part of the brain following either blockage of an artery or internal bleeding (hemorrhage) of an artery supplying blood to that area of the brain.

BRFSS Questions

Has a doctor, nurse, or other health professional ever told you that you had any of the following?

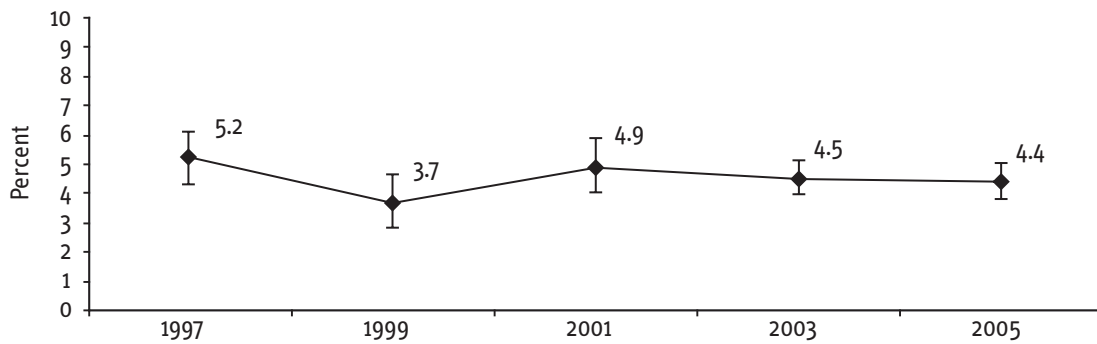
- 1. [Ever told] you had a heart attack, also called a myocardial infarction?*
- 2. [Ever told] you had angina or coronary heart disease?*
- 3. [Ever told] you had a stroke?*

History of heart attack among New York State adults, by BRFSS survey year



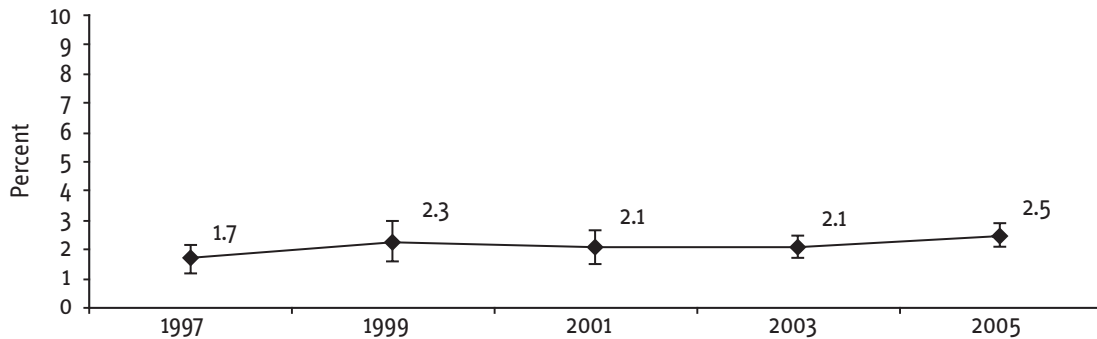
Note: Error bars represent 95% confidence intervals.

History of angina among New York State adults, by BRFSS survey year



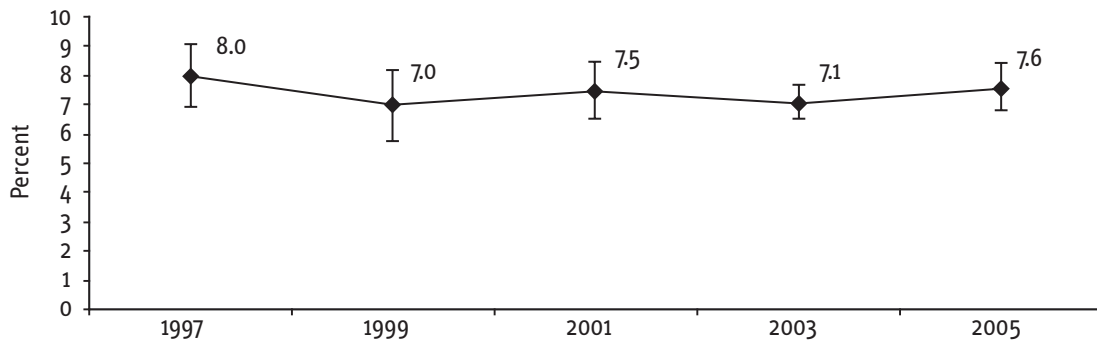
Note: Error bars represent 95% confidence intervals.

History of stroke among New York State adults, by BRFSS survey year



Note: Error bars represent 95% confidence intervals.

History of cardiovascular disease (heart attack, angina, stroke) among New York State adults, by BRFSS survey year



Note: Error bars represent 95% confidence intervals.

History of cardiovascular disease (self-reported heart attack, angina, or stroke) among New York State adults: 2005 BRFSS

| | Heart attack [n=7,724] | | Angina [n=7,708] | | Stroke [n=7,766] | | Heart attack, angina, or stroke [n=7,787] | |
|--------------------------------|---------------------------|---------------------|---------------------|-----------|---------------------|---------|--|-----------|
| | % ^a | 95% CI ^a | % | 95% CI | % | 95% CI | % | 95% CI |
| New York State (NYS) | 3.5 | 3.0-3.9 | 4.4 | 3.8-4.9 | 2.5 | 2.0-3.0 | 7.6 | 6.9-8.4 |
| Sex | | | | | | | | |
| Male | 4.3 | 3.6-5.1 | 5.0 | 4.2-5.9 | 2.9 | 1.9-3.9 | 9.0 | 7.8-10.3 |
| Female | 2.7 | 2.2-3.2 | 3.7 | 3.0-4.5 | 2.1 | 1.6-2.5 | 6.3 | 5.5-7.2 |
| Age (years) | | | | | | | | |
| 18-24 | 0.05 | 0.0-0.2 | 0.3 | 0.0-0.8 | 1.5 | 0.0-4.2 | 1.7 | 0.0-4.4 |
| 25-34 | 0.8 | 0.1-1.4 | 0.6 | 0.1-1.2 | 0.4 | 0.0-0.8 | 1.7 | 0.7-2.6 |
| 35-44 | 0.7 | 0.3-1.2 | 0.5 | 0.1-0.8 | 1.4 | 0.6-2.1 | 2.2 | 1.4-3.2 |
| 45-54 | 1.9 | 1.2-2.7 | 3.9 | 2.6-5.2 | 1.1 | 0.5-1.8 | 5.4 | 4.0-6.8 |
| 55-64 | 5.1 | 3.5-6.7 | 7.0 | 5.3-8.8 | 3.8 | 2.2-5.3 | 12.0 | 9.7-14.3 |
| ≥ 65 | 12.3 | 10.5-14.2 | 14.4 | 12.1-16.6 | 7.0 | 5.6-8.5 | 23.3 | 20.8-25.8 |
| Race/ethnicity | | | | | | | | |
| White non-Hispanic | 3.8 | 3.3-4.3 | 4.9 | 4.3-5.5 | 2.2 | 1.8-2.6 | 8.1 | 7.4-8.9 |
| Black non-Hispanic | 3.7 | 2.3-5.1 | 4.1 | 2.6-5.6 | 2.5 | 1.4-3.5 | 7.2 | 5.2-9.2 |
| Hispanic | 2.8 | 1.3-4.2 | 2.3 | 1.2-3.5 | 3.1 | 0.7-5.5 | 6.0 | 3.4-8.6 |
| Other non-Hispanic | 2.4 | 0.7-4.1 | 5.1 | 2.0-8.2 | 3.2 | 1.4-5.0 | 8.0 | 4.5-11.5 |
| Annual household income | | | | | | | | |
| < \$15,000 | 7.3 | 4.9-9.6 | 6.7 | 4.9-8.5 | 6.3 | 4.1-8.6 | 13.9 | 10.9-16.9 |
| \$15,000-\$24,999 | 3.9 | 2.8-5.0 | 4.8 | 3.5-6.1 | 3.0 | 0.6-5.3 | 9.1 | 6.5-11.7 |
| \$25,000-\$34,999 | 3.8 | 2.3-5.4 | 6.4 | 3.8-9.1 | 3.1 | 1.6-4.6 | 10.1 | 7.1-13.0 |
| \$35,000-\$49,999 | 3.8 | 2.5-5.1 | 4.9 | 3.5-6.4 | 2.0 | 1.1-3.0 | 7.2 | 5.4-8.9 |
| \$50,000-\$74,999 | 1.8 | 1.1-2.6 | 2.7 | 1.7-3.7 | 1.3 | 0.6-2.0 | 4.7 | 3.4-6.0 |
| ≥ \$75,000 | 1.5 | 1.0-2.1 | 2.9 | 1.9-3.9 | 1.0 | 0.4-1.5 | 4.6 | 3.4-5.8 |
| Missing ^b | 4.6 | 3.2-6.1 | 4.2 | 2.8-5.6 | 2.8 | 1.6-4.0 | 8.1 | 6.2-9.9 |
| Educational attainment | | | | | | | | |
| Less than high school | 5.8 | 3.7-7.8 | 8.2 | 2.2-11.3 | 4.8 | 2.8-6.7 | 13.4 | 9.9-16.8 |
| High school or GED | 4.3 | 3.4-5.1 | 5.2 | 4.2-6.1 | 2.6 | 1.9-3.3 | 9.1 | 7.8-10.4 |
| Some post-high school | 3.3 | 2.3-4.2 | 3.6 | 2.7-4.6 | 2.6 | 0.9-4.2 | 7.1 | 5.2-9.0 |
| College graduate | 2.3 | 1.7-2.8 | 3.0 | 2.4-3.7 | 1.5 | 1.0-2.0 | 5.0 | 4.1-5.8 |
| Disability^c | | | | | | | | |
| Yes | 8.5 | 7.0-10.0 | 10.5 | 8.8-12.1 | 6.0 | 4.7-7.3 | 18.0 | 15.9-20.1 |
| No | 2.3 | 1.8-2.7 | 3.0 | 2.4-3.5 | 1.5 | 1.1-1.9 | 5.0 | 4.3-5.7 |
| Region | | | | | | | | |
| New York City (NYC) | 3.0 | 2.2-3.9 | 3.8 | 2.7-4.8 | 2.2 | 1.4-2.9 | 6.7 | 5.4-8.0 |
| NYS exclusive of NYC | 3.7 | 3.2-4.2 | 4.7 | 4.1-5.3 | 2.7 | 2.0-3.4 | 8.2 | 7.2-9.1 |

^a % = weighted percentage; CI = confidence interval.

^b "Missing" category included because more than 10% of the sample did not report income.

^c All respondents who report activity limitations due to physical, mental, or emotional problems OR have health problems that require the use of special equipment.

Copies may be obtained by contacting:

BRFSS Coordinator
New York State Department of Health
Bureau of Chronic Disease, Epidemiology and Surveillance
Empire State Plaza, Rm. 565, Corning Tower
Albany, NY 12237-0679

or by phone or electronic mail:
(518) 473-0673 or
BRFSS@health.state.ny.us or
www.health.state.ny.us

State of New York
Eliot Spitzer, Governor
Department of Health
Richard F. Daines, M.D., Commissioner
