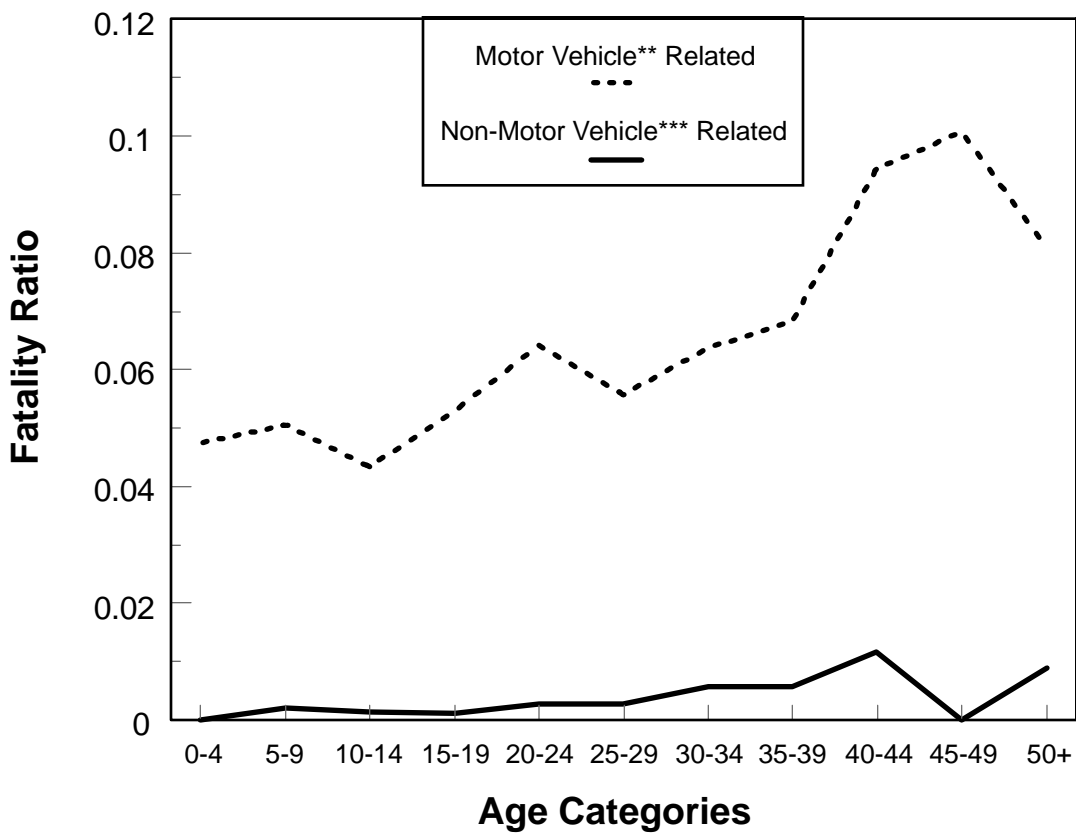


Fatality Ratio* by Age

Deaths and Non-Fatal Hospitalizations Due to Bicycle Injuries New York State, 1990 - 1994



* Fatality Ratio = $\frac{\text{All Bicyclist Deaths}}{(\text{All Bicyclist Deaths} + \text{Non-Fatal Hospitalizations})}$

**E-codes E810-E825, .6

***Railway (E800-E807, .3) excluded

NYS DOH, Bureau of Injury Prevention
(SPARCS)(GEN12MTH) Issued: 1/97